

Cambridge School Weekly Newsletter

Friday 20th September 2024

Dear Parent/Carer,

We were delighted to host Rupa Huq MP for Ealing Central and Acton and the local MP for our school (her constituency also includes Wormholt, White City and Wormwood Scrubs). Rupa addressed both Atlantic and Pacific Pod assemblies and gave a presentation on the roles and responsibilities of an MP as well as insights into the functions of Parliament. The students behaved excellently and were attentive and asked thoughtful questions. We are inspired by her success in elections and I gave students the task to go back to their classes and prepare their speeches for the upcoming School Council elections where students represent their peers, campaign on what matters to them to improve our school for all and ensure that student voice is heard loud and clear. Rupa enjoyed her time at the school and we took her on a tour so she could see students learning, but also to understand the challenges of delivering a quality education in a less than ideal building. Rupa has promised to advocate for us in our quest for improved facilities and resources.

The enriched curriculum continues to develop and Horticulture classes started this week delivered by a professional gardener from Hammersmith Growers Association. Turing class also had their first day of college links at West London College as they start preparing for the transition to college. The important life skills of planning journeys and embracing change and new environments and relationships are the key learning objectives this half term.

Please read the attendance chart carefully to understand the thresholds of intervention and be aware that attendance under 80% will most likely incur a penalty fine. That is a situation we all want to avoid. Let's work together to ensure above 90% attendance for all learners. Have a lovely weekend!

Yours sincerely,

A. Campbell

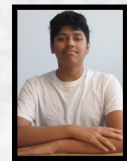
Alan Campbell,
Head Teacher

Stars Of The Week

100% Student Attendance Award



Cameron Cresswell

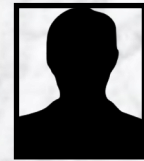


Faheem Rahman

Outstanding Behaviour Award



Summer Shand



Mikel Hastick

Note: We're currently updating our student photos and adding our new students.

Some parents have not given permission for their child's photo to be used in external publications

Well done!

Important Dates

24th Sept: UK Fitness Day

27th Sept: Macmillan Coffee Morning

October is Black History Month

3rd Oct: National Poetry Day

4th Oct: World Smile Day

W/C 7th Oct: Harvest Festival

10th Oct: World Mental Health Day

28th Oct—1st Nov: HALF TERM

Attendance: Week Ending 13th September



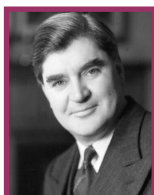
Akala Class

87%



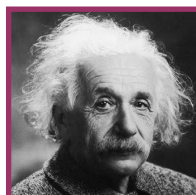
Angelou Class

88%



Bevan Class

90%



Einstein Class

98%



Farah Class

71%



Franklin Class

91%



Hawking Class

95%



Hockney Class

62%



Obama Class

95%



Seacole Class

89%



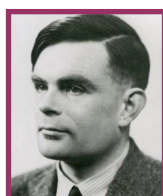
Rashford Class

93%



Rowling Class

86%



Turing Class

98%



Wiltshire Class

88%



**Einstein &
Turing Class!**

House Competition: No Update This week

Points are awarded for good work and good behaviour, and can be earned for winning competitions



0



0



0



0



0



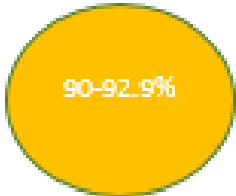
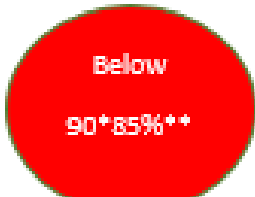


0

Contact us:

Cambridge School, 61 Bryony Road, London W12 0SP, Tel – 0208 735 0980. Email admin@cambridge.lbhf.sch.uk

What is Your Child's Attendance percentage?

Attendance Percentage	What it means	What the school will do
 <p>96-100%</p>	Attendance levels are good to excellent.	The school will give positive encouragement/rewards.
 <p>93-95.9%</p>	Attendance levels beginning to cause concern.	Letter from school warning parents of concern and advise that future absences will not be authorised unless medical evidence is provided.
 <p>90-92.9%</p>	Attendance levels causing more significant concern.	Parents invited to a meeting /attendance panel at school and Attendance Action Plan/contract is agreed.
 <p>Below 90*85%**</p>	Attendance decreased to an unacceptable level –below persistent absence rate.	*Below 90% - school will refer to Family Support Services when complex issues is identified. *Below 85% - school will refer to ACE for prosecution.

Attendance plays a crucial role in your child's academic success and overall development. Regular attendance ensures consistent learning, engagement, and participation in school activities. **We encourage all parents to review their child's attendance and compare it to the school's expected attendance levels.** If you have any concerns or need further clarification on where your child stands, please reach out to the school office for more information. Let's work together to support your child's educational journey!

Jane Ogunbowale
Assistant headteacher|
Cambridge School
Safeguarding\Behaviour\Attendance

You are invited to **THE SPACE - a space to share**

The Space is a [monthly, online forum for parents and carers](#) launched in February 2024.

- ◆ a reflective, informal and non-judgemental space
- ◆ a way of coming together to meet and talk with other parents and carers about the challenges and rewards of having a child in a SEN school
- ◆ the place to share experiences, ideas and thoughts with others about what you find helpful or challenging
- ◆ continue discussions raised in workshops facilitated by the school
- ◆ a way to feel part of the school community
- ◆ discussions about general issues affecting your children like mental health, socialising and developing independence

Please join us on the following dates this term by accessing the link below.

19 September

17 October

21 November

19 December

Microsoft Teams [Need help?](#)

[Join the meeting now](#)

Meeting ID: 372 782 064 652

Passcode: eRxDM7



Any questions, please call me at the school or email: l.selby@cambridge.lbhf.sch.uk

Lana Selby

Arts Therapist

Cambridge School



Email any of us if you're interested in joining Cambridge School's Parent & Teacher Association:

Fran: f.rieger@cambridge.lbhf.sch.uk

Liw o.grzelek@cambridge.lbhf.sch.uk

Pam: p.pike@cambridge.lbhf.sch.uk