

Cambridge School Weekly Newsletter

Friday 19th January 2024

Dear Parent/Carer,

Many of you who follow the news will be aware that there is a national crisis in school attendance in England. A recent survey showed that three out of ten parents do not believe that it is important for children to attend school every day. Persistent absence, which is defined as less than 90% attendance in the school year is running at 20.58% nationally. Disappointingly, the figure for Cambridge School is significantly higher than that. I don't want to embarrass us all by publishing it today as I want it to reduce to less than the national average over the term ahead.

In a school year, a child with 90% attendance misses 4 weeks of the school year. A child with 80% attendance misses 8 weeks of the school year. That is a huge amount of lost learning time which will never be recovered whatever interventions are put in place. Our attendance last week was nearly 87% which is the highest it has been since September. I am delighted by this progress, but it has to be our resolution to get to 90% weekly, consistently, at the very least.

Please do all that you can to get your child to school every day to give them the best opportunity of success.

Yours sincerely,



Alan Campbell,
Head Teacher

Relaunch of THE SPACE – a monthly, online forum for parents/carers

The Space is

- a reflective, informal and non-judgemental space
- a way of coming together to meet and talk with other parents and carers about the challenges and rewards of having a child in a SEN school
- the place to share experiences, ideas and thoughts with others about what you find helpful
- a way to feel part of the school community

Please complete this quick survey to show your availability. Please click on the link <https://www.surveymonkey.com/r/JZMH62F>

Thank you,

Lana,

Arts Therapist



Important Dates

22nd Jan—2nd Feb: Exam Catchup

1st Feb: Time To Talk Day

W/C 5th Feb: Children's Mental Health Week

6th Feb: Safer Internet Day

HALF TERM: 12th—16th February

W/C 26th Feb: Year 8 EHCPs Begin

March is International Women's Month

1st Mar: World Wildlife Day

W/C 4th Mar: National Careers Week

8th Mar: International Women's Day

W/C 11th Mar: Nutrition & Hydration Week

15th Mar: Red Nose Day & World Sleep Day

W/C 18th Mar: Book Fair

21st Mar: Dress Up For World Book Day & International Day Of Happiness

22nd Mar: World Maths Day

28th Mar: End Of Term, Finish at 1pm

Easter Holidays: 29th Mar—12th April

15th Apr: INSET DAY

16th Apr: Students Return to school

Attendance: Week Ending 12th January 2024:



Akala Class

89%



Angelou Class

88%



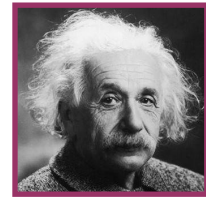
Armstrong Class

73%



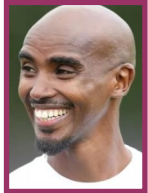
Bevan Class

75%



Einstein Class

85%



Farah Class

66%



Franklin Class

98%



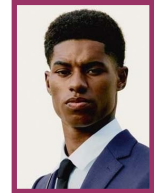
Nightingale Class

86%



Obama Class

88%



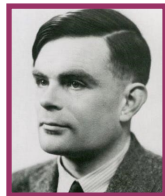
Rashford Class

97%



Rowling Class

67%



Turing Class

100%



Wilberforce Class

93%



Wiltshire Class

98%



**Turing
Class!**

House Competition.

Points are awarded for good work and good behaviour, and can be earned for winning competitions



712



646



654



620



574



708

Contact us:

Cambridge School, 61 Bryony Road, London W12 0SP, Tel – 0208 735 0980. Email admin@cambridge.lbhf.sch.uk

RA

Call for entries

An exciting opportunity for students aged 4–19 to exhibit their artwork online and at the Royal Academy of Arts

Open for submissions
8 January – 27 March 2024

Find out more and enter
royalacademy.org.uk/youngartists
#RAYoungArtists

Young Artists' Summer Show

2024

Royal
Academy
of Arts

Made possible by Robin Hambro