

61 Bryony Road,
London
W12 0SP

Tel: 0208 735 0980
Email: admin@cambridge.lbhf.sch.uk

Website: www.cambridge.lbhf.sch.uk



Prospectus





'We feel that the school is doing a great job with our son. All staff are friendly, supportive and kind. Thank you for all the work you do every day.'
Parent

Multidisciplinary Team

Positive Partnerships

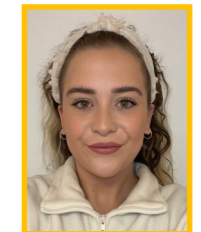
The Multi Disciplinary Team (MDT) at Cambridge School is a group of external specialists who work together with students, their class-team, other professionals and their family to encourage well-being, ensure that their provision is being met and to develop students' abilities in and out of school.

MDT works effectively to address our pupils' needs. We encourage parents to work in partnership with MDT and to develop positive relationships in order to meet their child's special educational needs and disabilities (SEND).

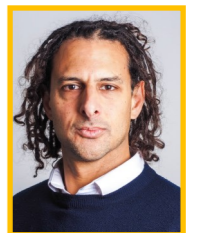
The Cambridge School MDT team comprises of School nurse, Occupational Therapists, Speech and Language Therapists, Designated Police Officer and Art and Drama Therapists.

The Student and Family Support Team (SFST) support students and families across the school, working with class-based staff and other professionals in school to ensure that children and young people are safe, happy and able to make progress and do well.

The team works with students directly in the classroom or in our specialist bases across the building supporting them to become "classroom ready". The team is able to visit families at home supported by other MDT professionals to help set up new routines, observe children and to model behaviour strategies.



Student and Family Support





Welcome

Choosing a secondary school can be a challenging experience and we hope to take some of the anxiety and uncertainty out of the process. We are open to visits from parents, carers, students and other professionals at any time and we are keen to showcase our achievements and our lifeblood, our students.

We believe in nurturing the whole child at Cambridge School. We aim to teach our children academic and emotional resilience and to maximise their achievements, but also provide a range of therapeutic services to nurture their mind and soul. It is our firm belief that children need to feel safe, happy and secure for them to succeed academically.

Our school motto is “learning for life, learning for work” and that underpins everything we do. We want our students to be independent, active citizens who are empowered and enabled to realise their potential as citizens of tomorrow. Communication is very much a part of our curriculum and helps to develop the knowledge, skills and experiences which make the learning journey enjoyable and meaningful.

I hope you enjoy reading our Prospectus and I look forward to welcoming you as a member of our school community.

Alan Campbell
Headteacher

“Students enjoy school. Their attendance is good. They are interested in the subjects they study, which in Years 7 to 9 are based closely on National Curriculum programmes, but which are well adapted for their learning needs and abilities.”

OFSTED

Our Dedicated Staff

Cambridge School is committed to a team approach to meeting all our students' needs. Our specialist and experienced staff comprise governors, senior leadership staff, teachers, learning support assistants, multi-agency specialists, students & family support team, volunteers and apprentices.

Our staff are highly committed professionals whose training and experience enables them to provide outstanding support for all our students.

Our curriculum balances meeting individual needs by ensuring all students access broad, balanced and rich learning experiences.

We take our responsibilities for safeguarding children and young people very seriously and follow the agreed London Child Protection procedures rigorously. All staff are trained annually; all staff have clearance to work with children. We have clear procedures in place to report any concerns. We also teach our learners to keep themselves safe, both within the school grounds and in the wider world. We work closely with parents and the multi-agency support team (MAST) to ensure that there is clarity and understanding of our procedures in relation to child protection. The ever changing world of technology creates opportunities, along with challenges for our young people and we ensure that our pupils are confident in safely using technology. Our safeguarding policy can be downloaded from our website, and our staff will be willing to discuss this in more detail should you have any questions.

We are committed to the provision of an inclusive school ethos and curriculum in which we promote positive images and understanding of the whole society. Through all our school policies and practices, we provide equal opportunities to all irrespective of race, religion, culture, gender, disability or differing ability.



"The hard work, dedication and commitment of the staff at all levels has made Cambridge School a safe, caring and nurturing environment for our students to help them develop their full potential."

School Governor

At Cambridge School, it is our belief that all our students can be responsible and resilient citizens in control of their own lives. Our curriculum is constructed around developing independent living and employability skills that will lead to economic and emotional wellbeing. We are committed to developing young people who can make their own choices and decisions and determine their own futures.



“I am so grateful and thankful to the school for everything that my daughter has achieved.”

Parent

- Provide a curriculum which prioritises skills for life and work, including relevant accreditation and work experience.
- Ensure our students have strong functional literacy and numeracy skills. Maximise opportunities for independence in daily life, including travel and self and home management skills.
- Personalise learning to meet individual needs.
- Nurture the whole child and develop their empathy and compassion.
- Provide opportunities to be a confident citizen within the community with full access to services.

About Us

Each class team is led by a class teacher and supported by learning support assistants. External specialists join classes to support learning and meet with class staff to share strategies. Art and Drama therapists work with children who have emotional and social barriers to learning to overcome.

Each classroom is set up to meet a range of learning levels and needs, ensuring that children have the opportunity to learn from each other as role models for learning, play and social skills. The learning environment supports practical, multi-sensory learning, learning through ICT and more independent research and presentation activities.

Specialist teaching is supported with a multi-sensory room and garden and a soft play area. The communication environment in each classroom can include Makaton signing, visual timetables and lesson menus using In Print symbols to support communication and understanding.



“The behaviour of students is good. They establish good relations with each other and with adults, and there is very little disruption to learning. This has a good impact on their learning and progress.”

OFSTED